

# IAM SERIES

---

## H1 MODELS

### INDEX

---

9	TECHNICAL DATA
10	DIMENSIONAL DRAWINGS
16	POWER CHARTS
18	SIDE LOAD CHARTS
21	ORDERING INSTRUCTIONS

www.Laheghi.com

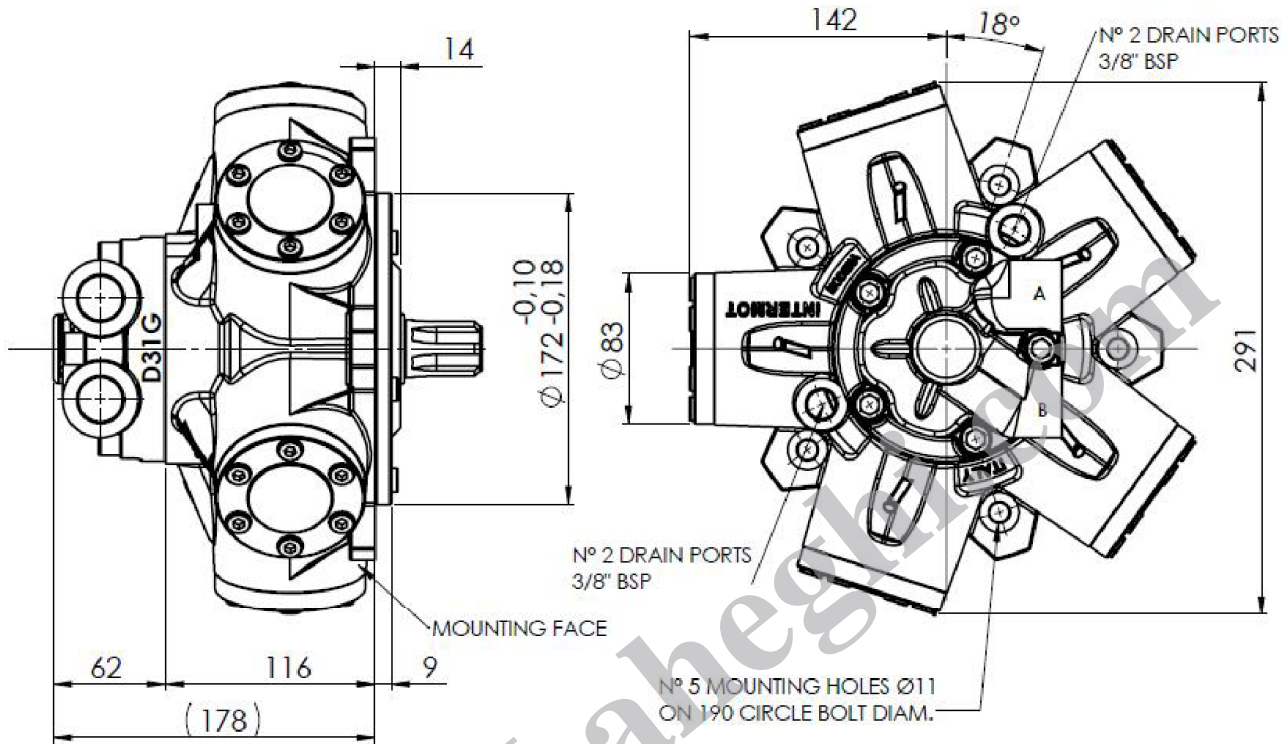
## IAM H1 - TECHNICAL DATA

MODEL	N° of pistons	Displacement	Specific Torque	Pressure			Speed		Max Case Pressure	Max Power	Dry Weight	Inertia moment of rotating parts		
				Max Cont.	Max Int.	Peak	Max Continuous	Peak						
		cc/rev	Nm/bar	bar	bar	bar	rpm	rpm	bar	hp	kW	kg	kg cm <sup>2</sup>	
IAM H1	80	5	82	1,3	250	300	350	950	1050	6	54	40	26	18
	100	5	99	1,6	250	300	350	950	1050	6	54	40	26	18
	150	5	151	2,4	250	300	350	950	1050	6	54	40	26	18
	180	5	182	2,9	250	300	350	800	900	6	54	40	26	18
	200	5	207	3,3	250	300	350	750	850	6	54	40	26	18
	250	5	251	4,0	250	300	350	750	850	6	54	40	26	18
	300	5	299	4,8	250	300	350	750	850	6	54	40	26	18

www.Laheghi.com

# IAM H1 - DIMENSIONAL DRAWINGS

## IAM 80 – 100 – 150 – 180 H1

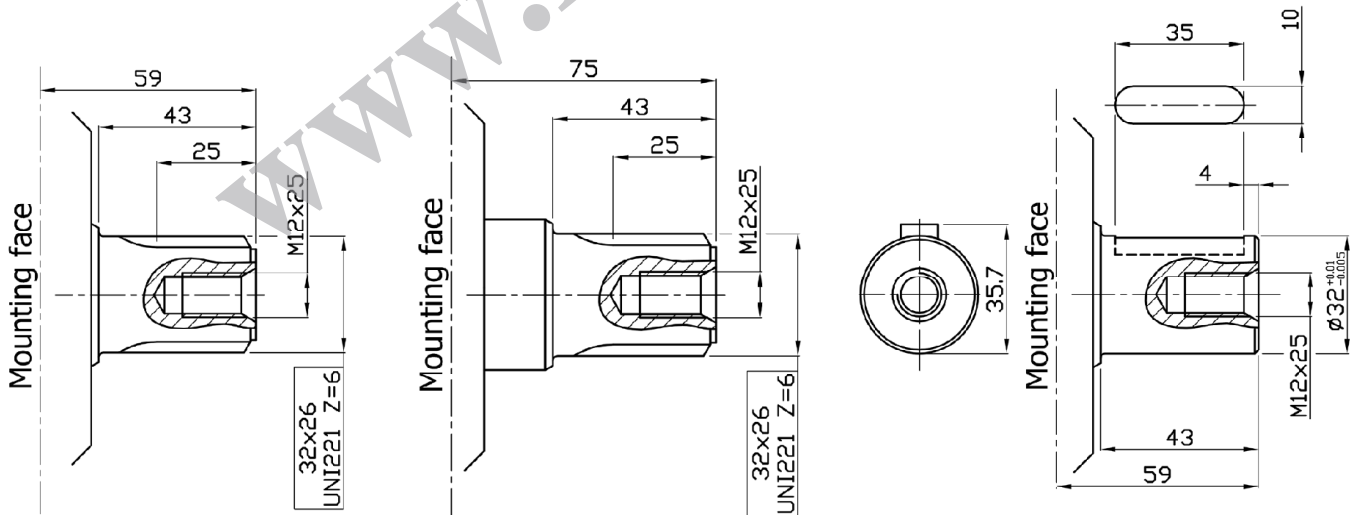


### SHAFT OPTIONS

A0: Standard splined shaft

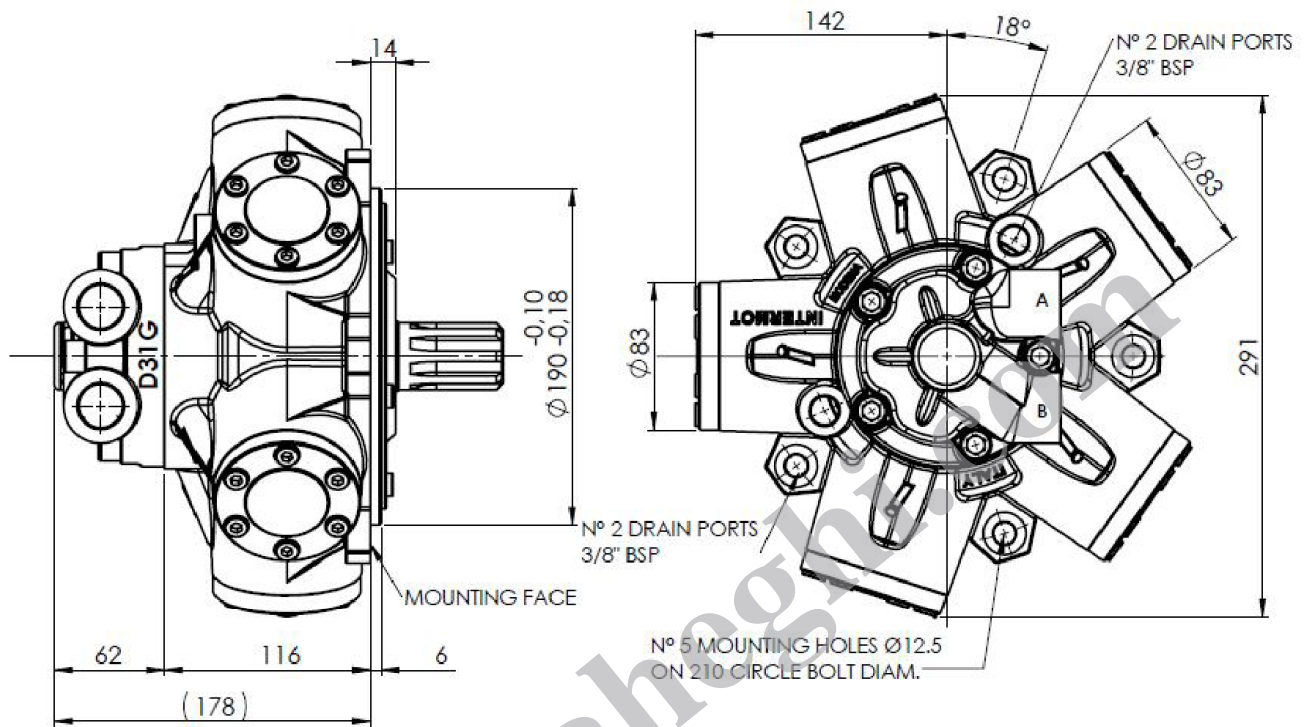
A1: Splined shaft on request

A2: Parallel shaft on request



FEMALE SHAFT AVAILABLE UPON REQUEST N35x2x30x16x9H DIN 5480 (100 and 150 cc/ Rev only)

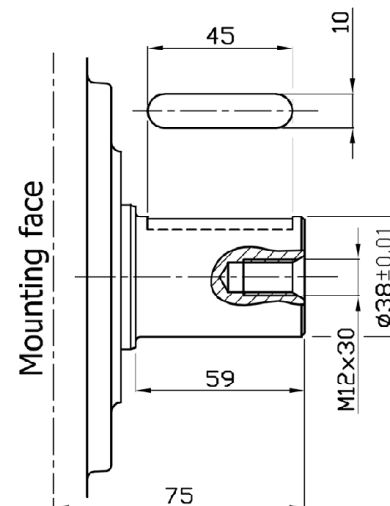
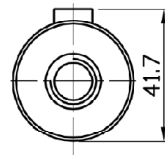
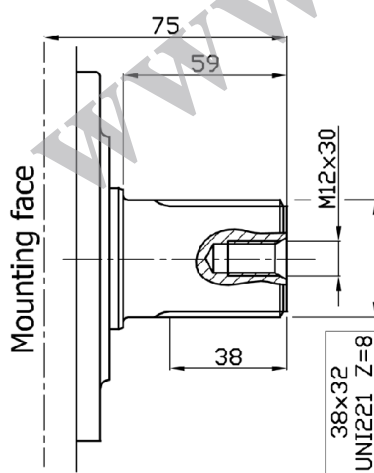
**IAM 200 – 250 – 300 H1**



**SHAFT OPTIONS**

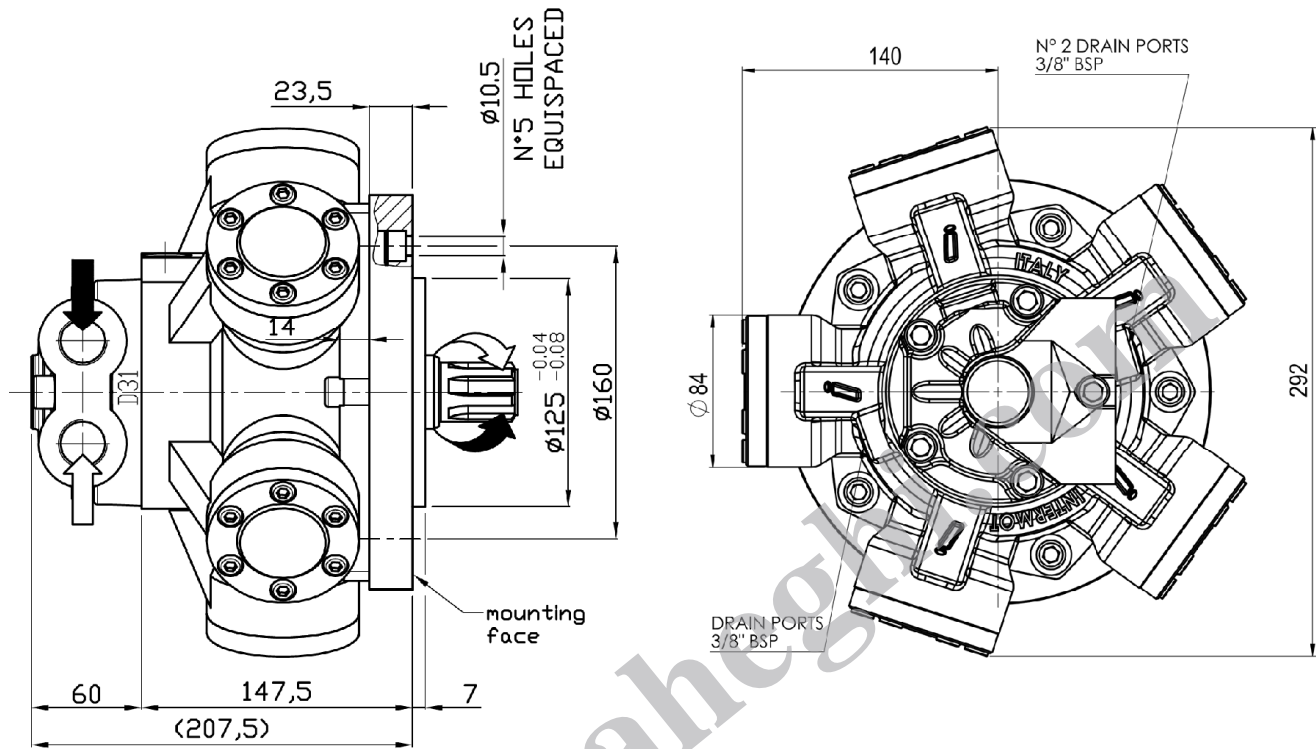
A0: Standard splined shaft

A2: Parallel shaft on request



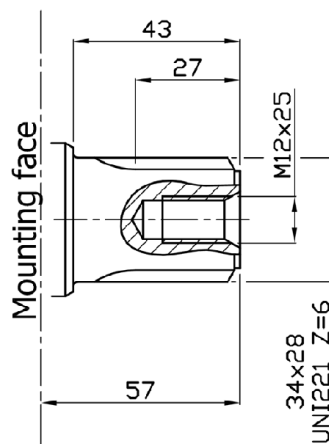
FEMALE SHAFT AVAILABLE UPON REQUEST N35x2x30x16x9H DIN 5480 (300 cc/Rev only)

**IAM 100/GM05 – 150/GM05 – 175/GM05 – 195/GM05 – 250/GM05 H1**

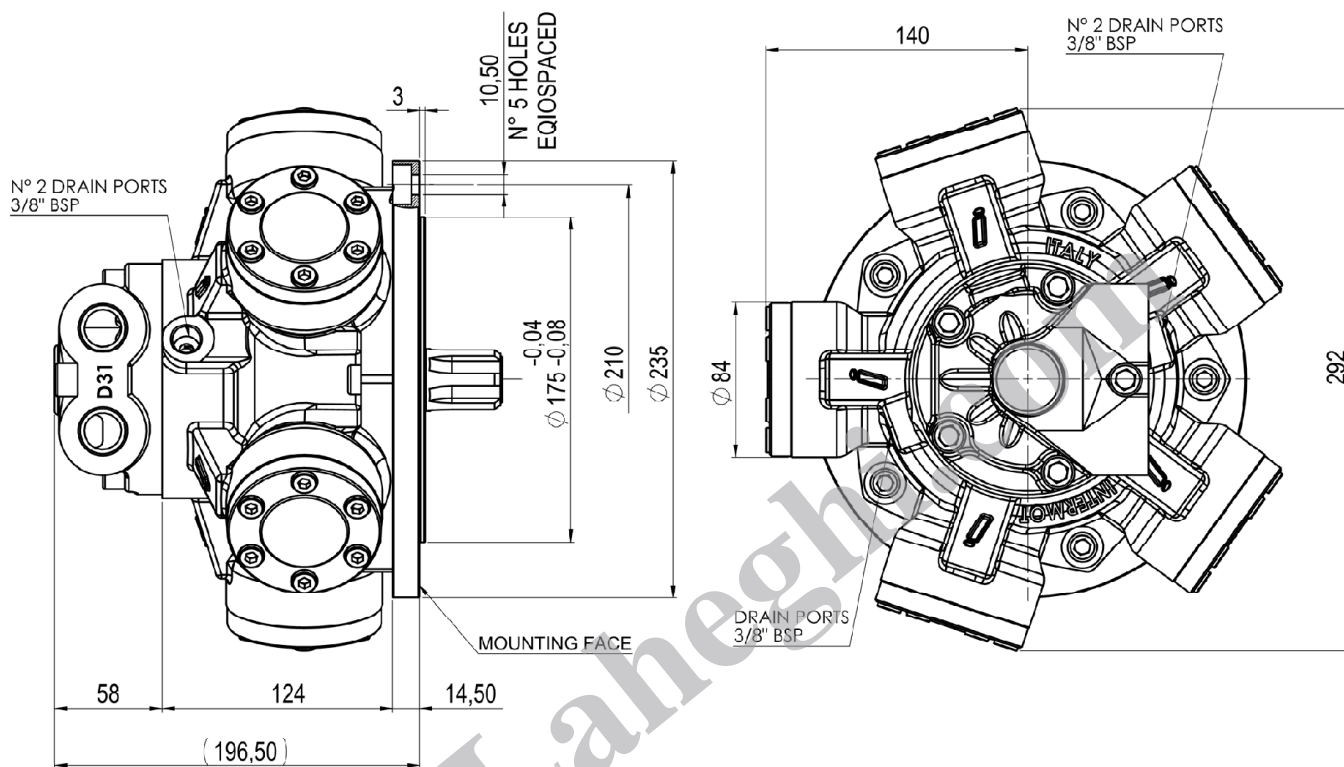


**SHAFT OPTIONS**

A0: Standard splined shaft

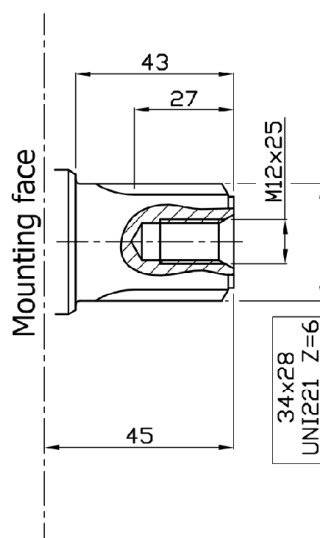


**IAM 100/BH – 150/BH – 175/BH – 195/BH – 250/BH H1**

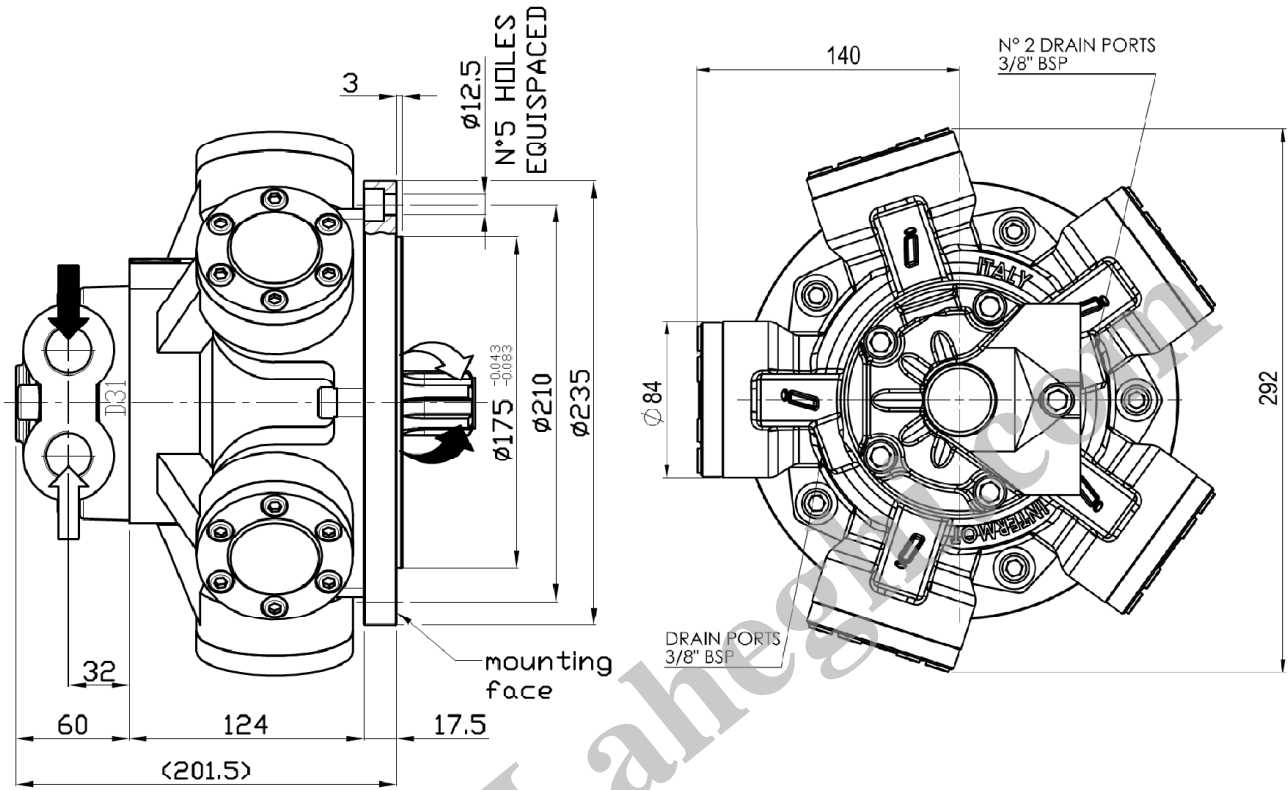


**SHAFT OPTIONS**

A0: Standard splined shaft

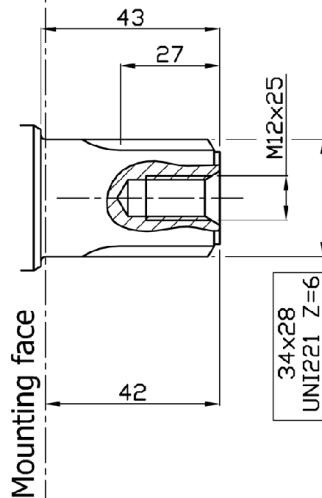


**IAM 100/GM1 – 150/GM1 – 175/GM1 – 195/GM1 – 250/GM1 H1**

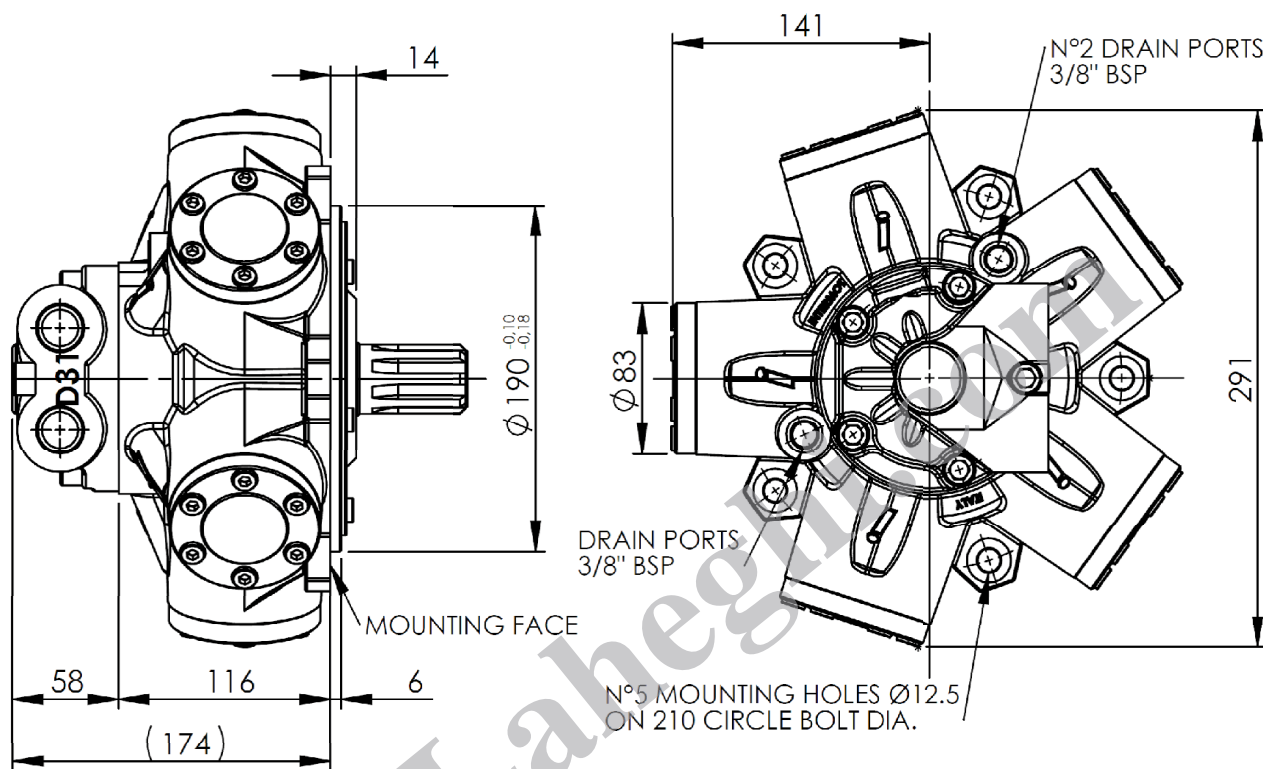


**SHAFT OPTIONS**

A0: Standard splined shaft

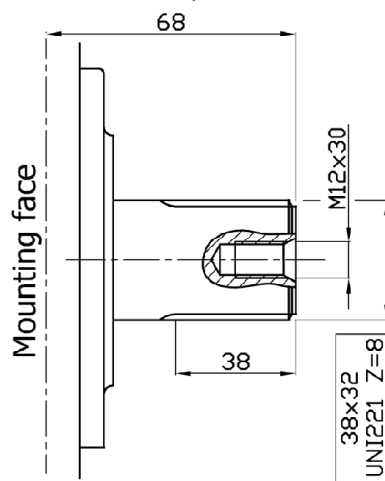


**IAM 200/PH – 250/PH – 300/PH H1**



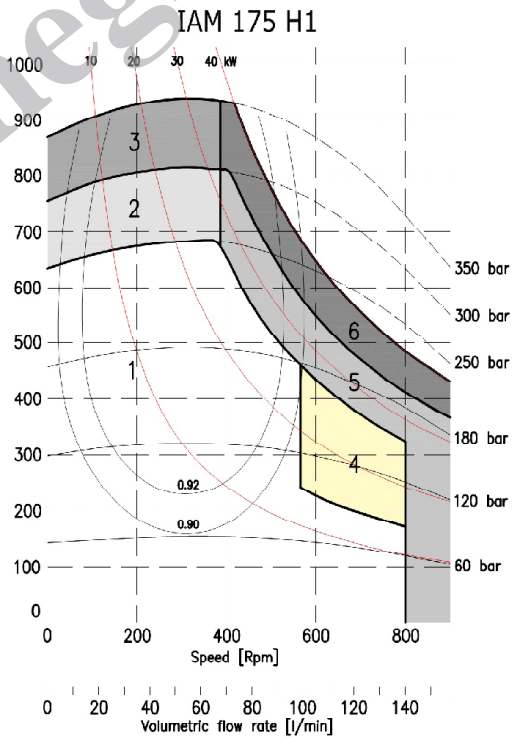
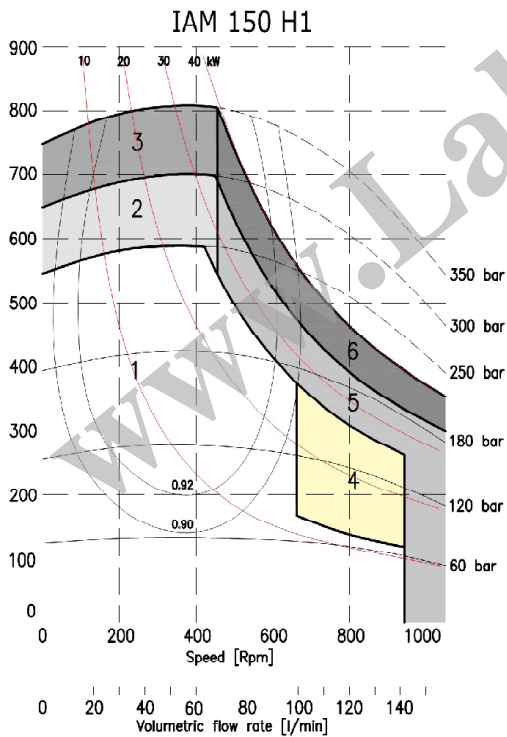
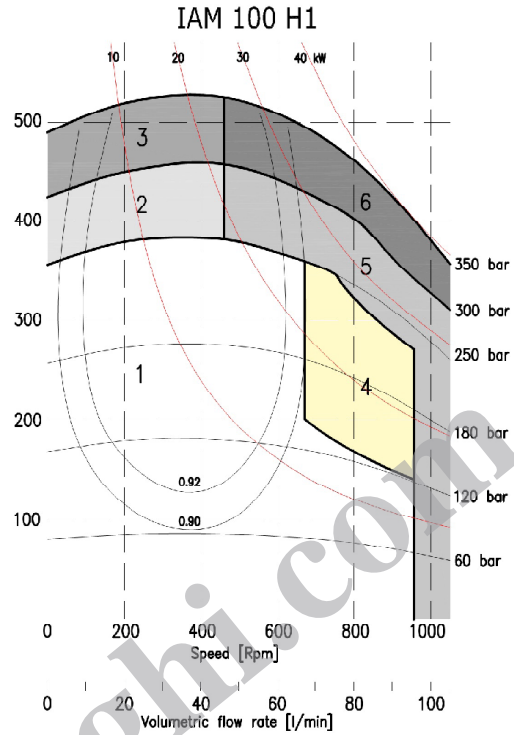
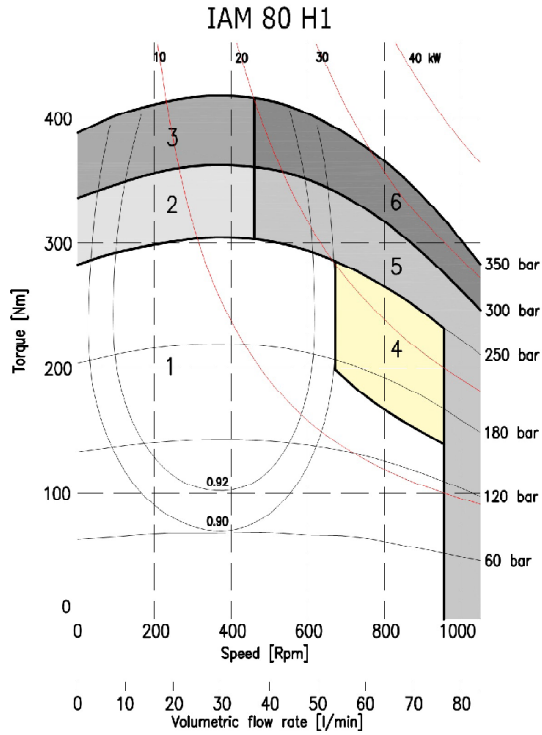
**SHAFT OPTIONS**

A0: Standard splined shaft



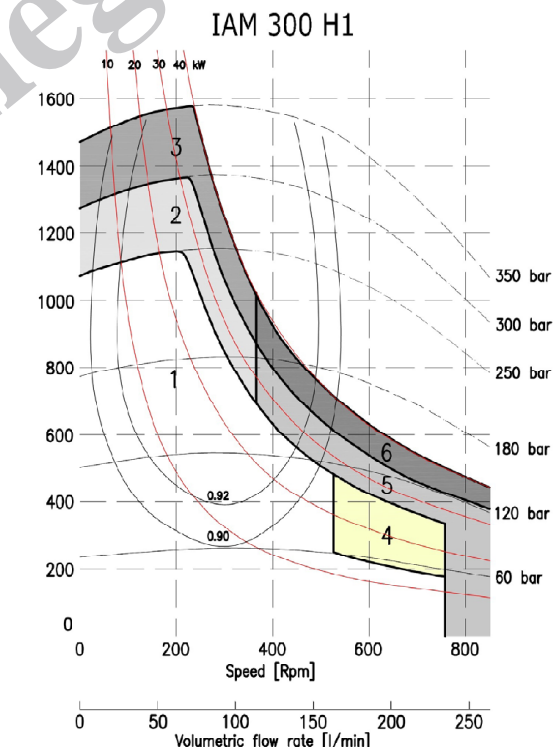
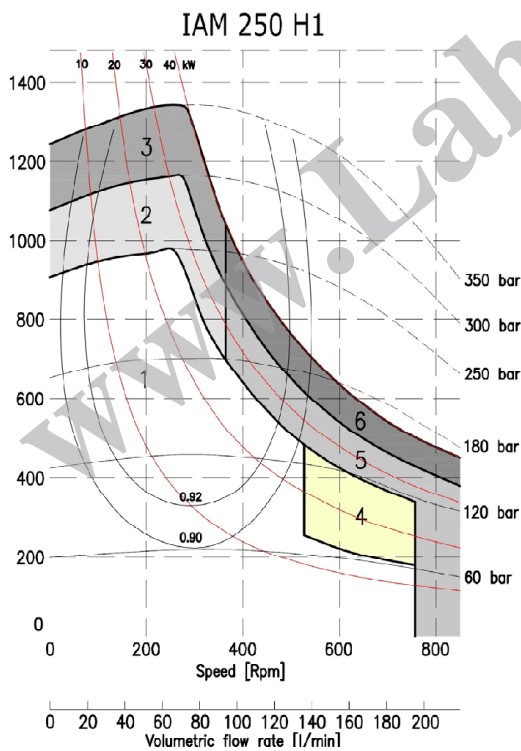
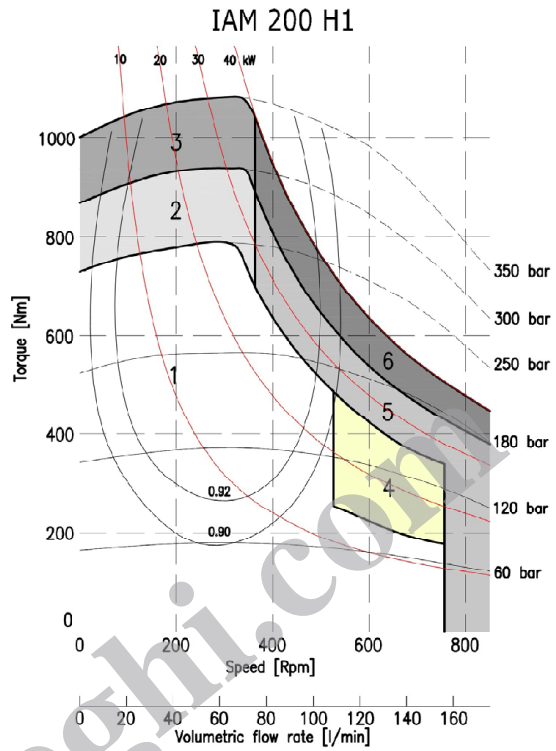
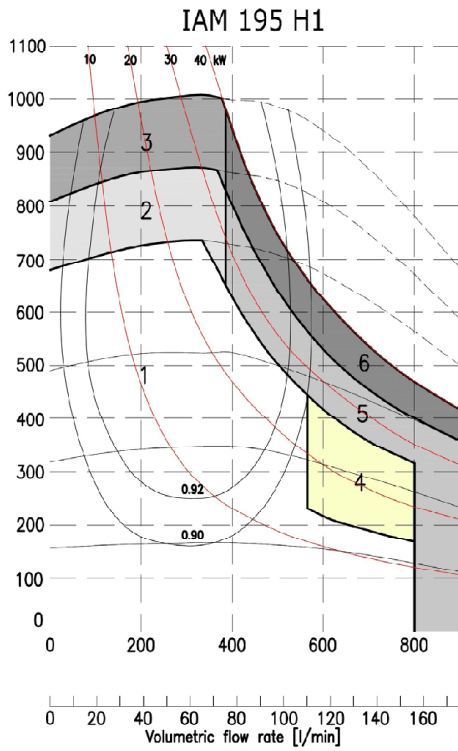


# IAM H1 - POWER CHARTS



1	Continuous operation
2	Intermittent operation for period 3-5 minutes every 10-15 minutes
3	Intermittent operation for very short period (3-5 seconds every 10-15 minutes)

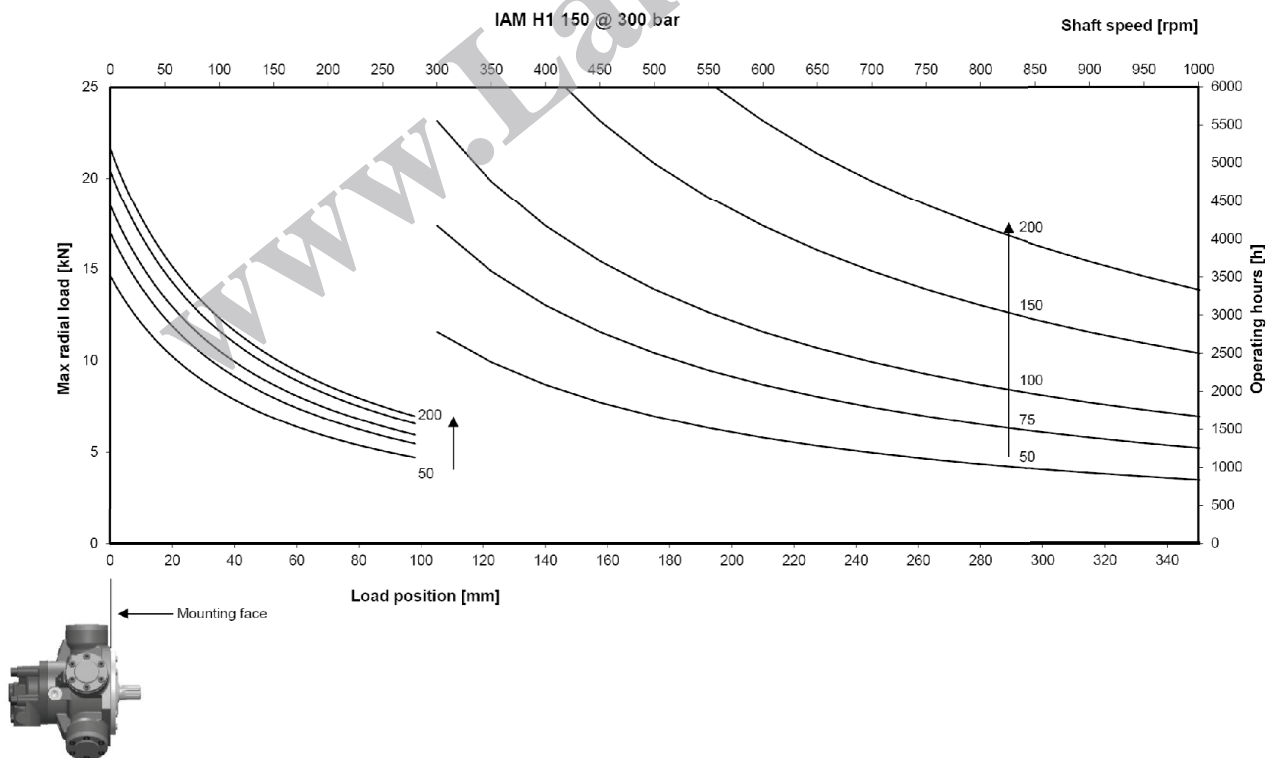
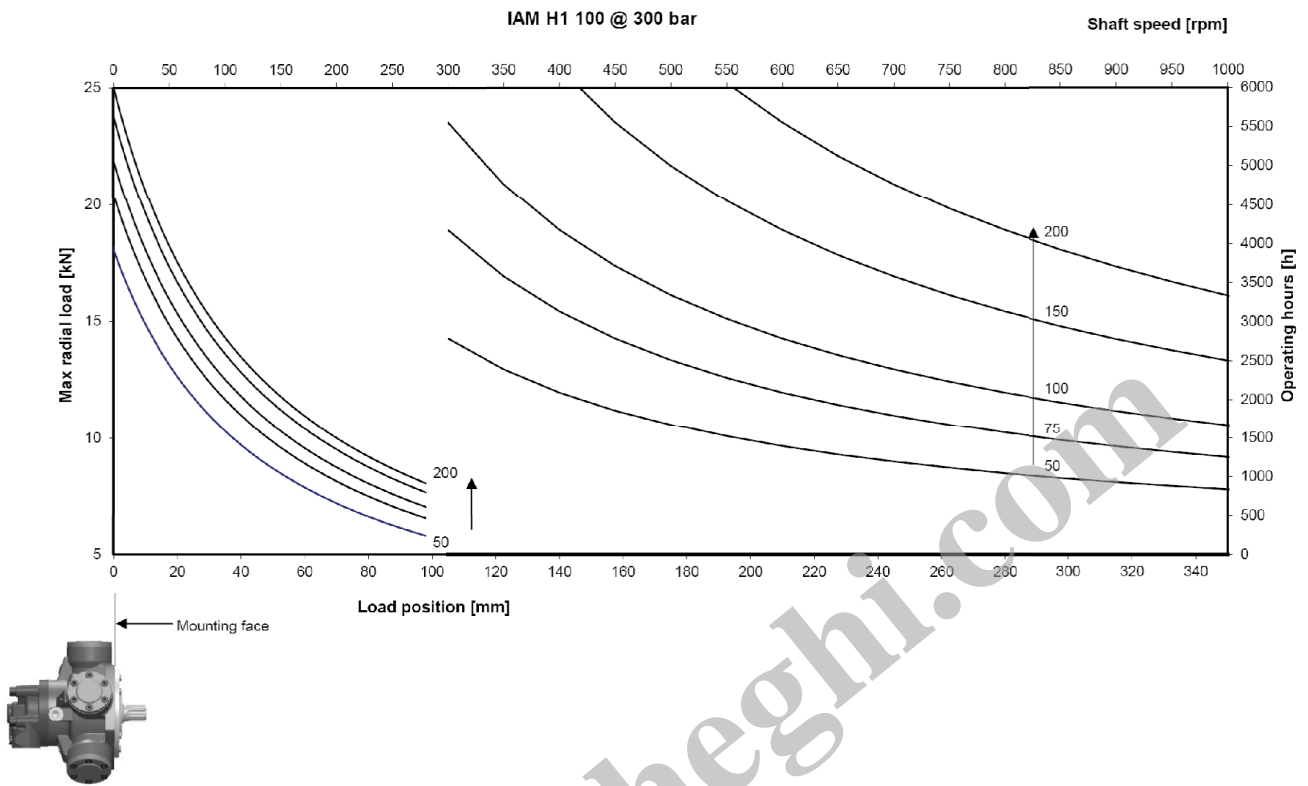
4	Continuous operation with flushing
5	Intermittent operation for period 3-5 minutes every 10-15 minutes with flushing
6	Intermittent operation for very short period (3-5 seconds every 10-15 minutes) with flushing

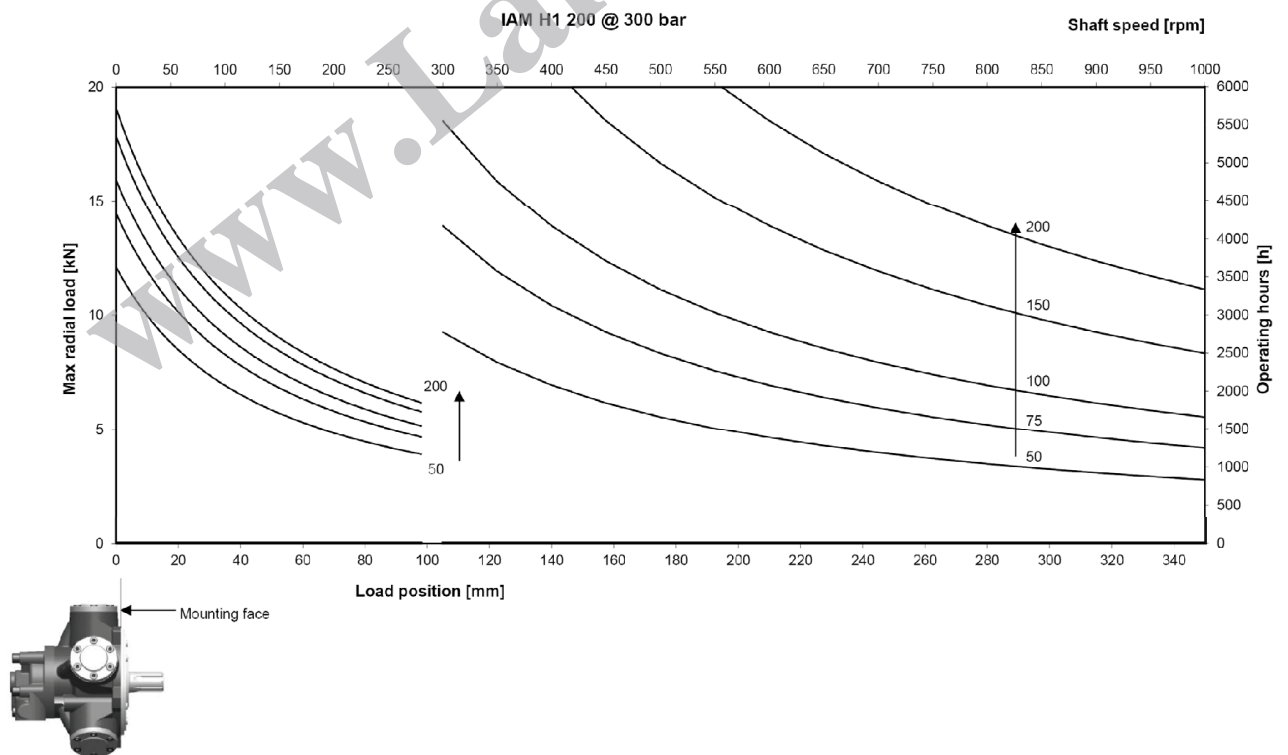
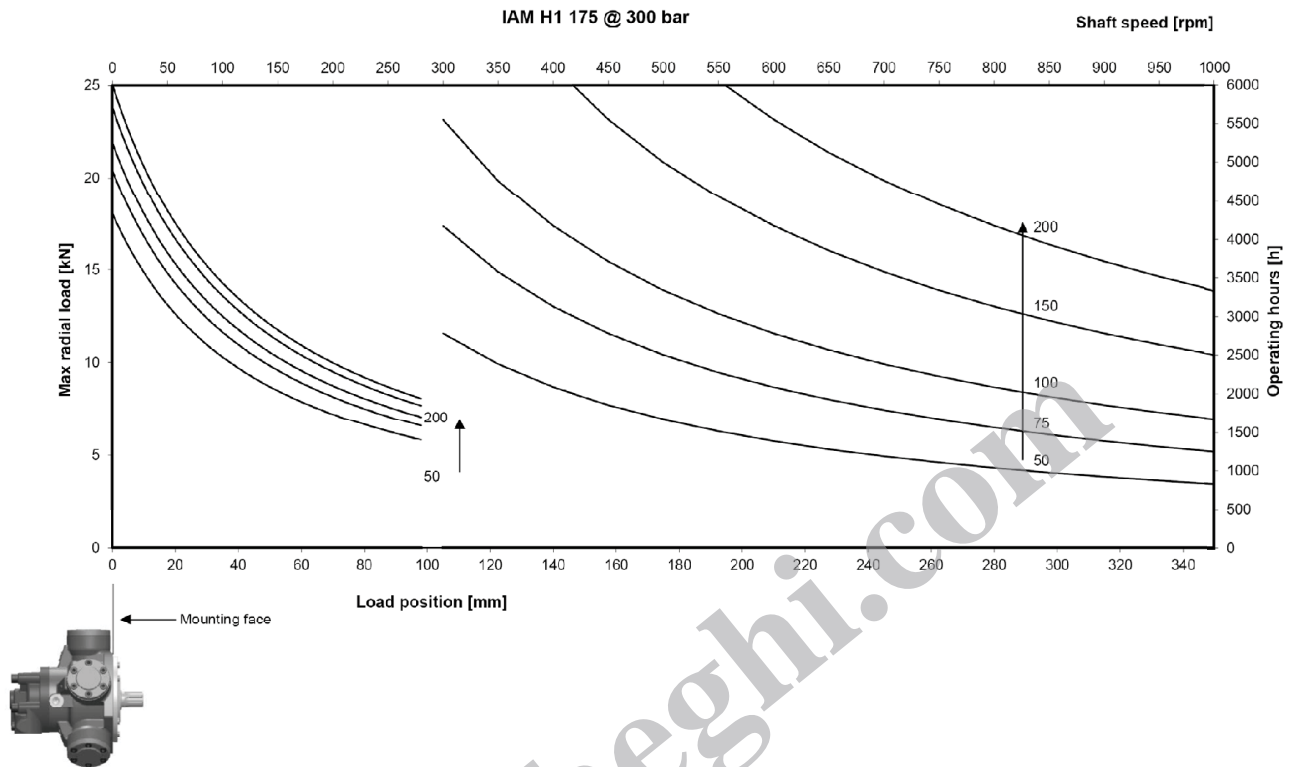


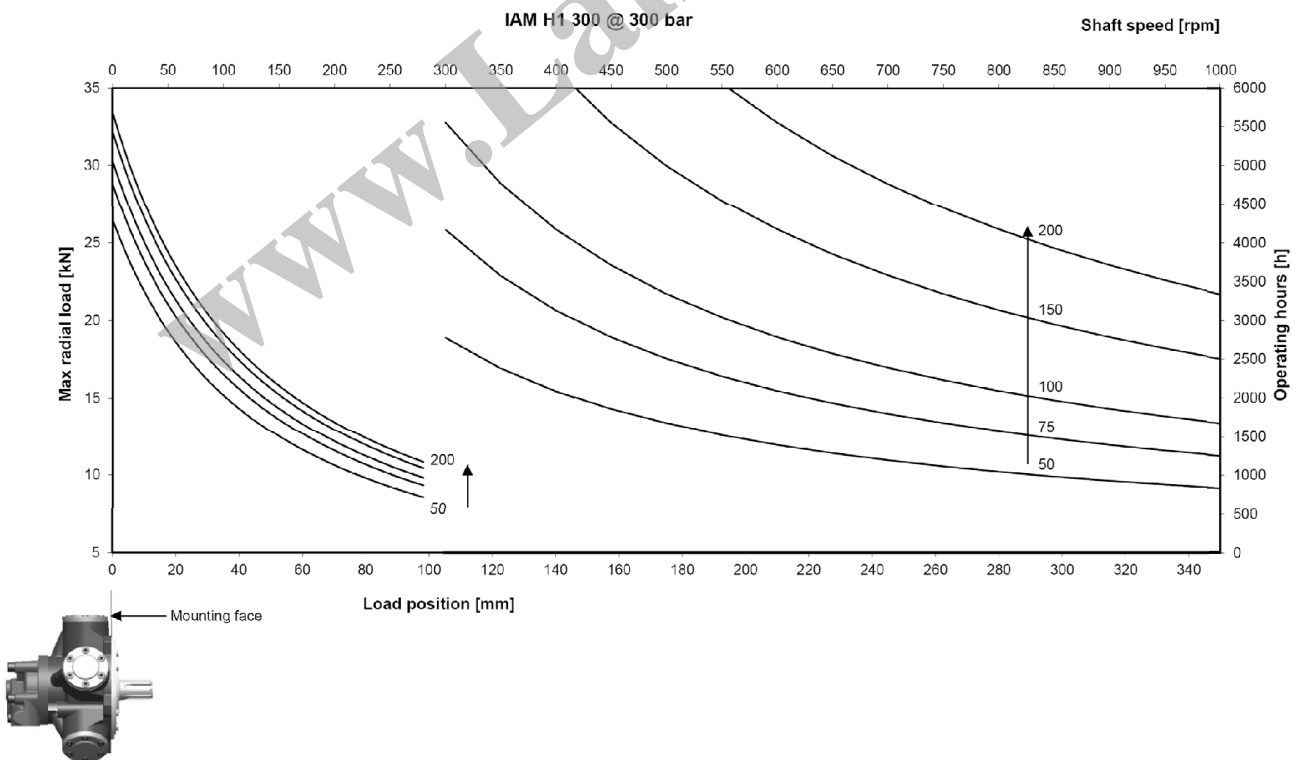
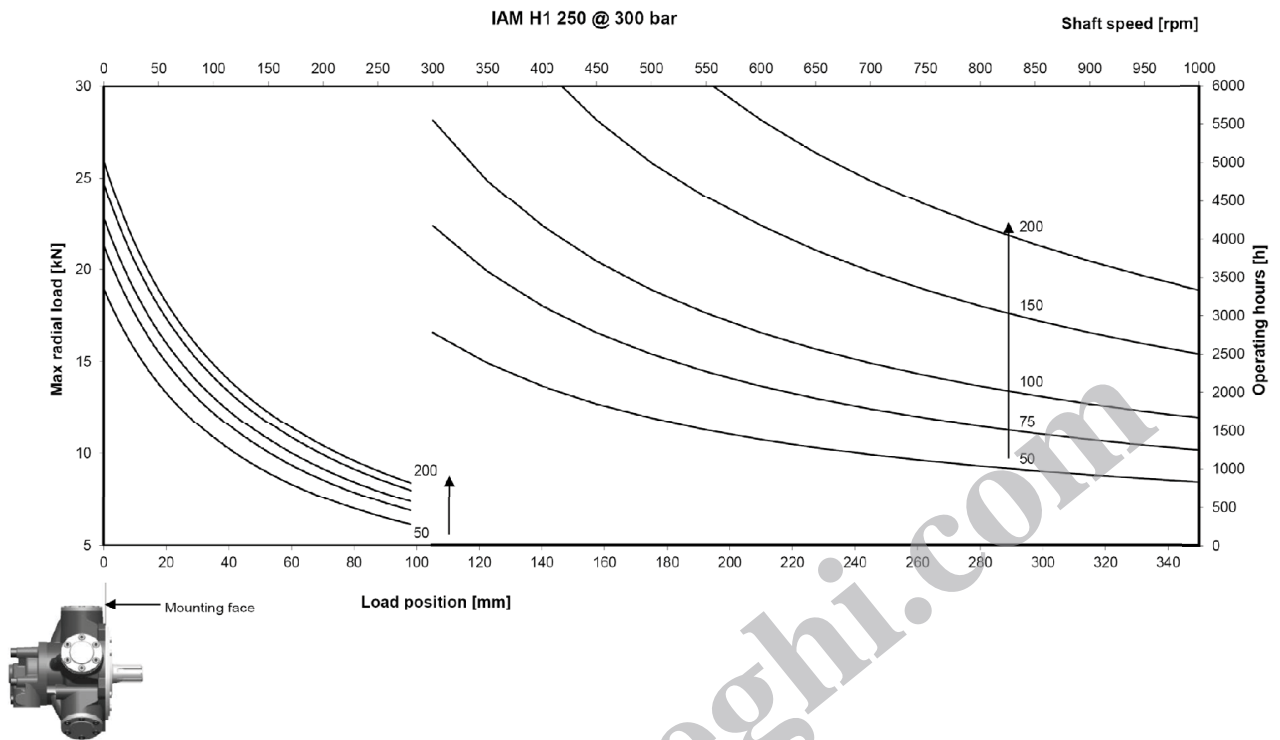
1	Continuous operation
2	Intermittent operation for period 3-5 minutes every 10-15 minutes
3	Intermittent operation for very short period (3-5 seconds every 10-15 minutes)

4	Continuous operation with flushing
5	Intermittent operation for period 3-5 minutes every 10-15 minutes with flushing
6	Intermittent operation for very short period (3-5 seconds every 10-15 minutes) with flushing

# IAM H1 - SIDE LOAD CHARTS







# IAM H1 - ORDERING INSTRUCTIONS

IAM	---	/---	H1	A_	D---	---	SB_
<b>Model</b> IAM							
<b>Displacement</b> 80 cc/rev 100 cc/rev 150 cc/rev 180 cc/rev 200 cc/rev 250 cc/rev 300 cc/rev							
<b>Interchangeability</b> /GM05 /BH /GM1 /PH							
<b>Housing</b> H1							
<b>Shaft</b> A0 – Standard splined shaft A1 – Special splined shaft A2 – Parallel keyed shaft							
<b>Distributor</b> D31 – ¾" BSP D31G – ¾" BSP D310 – 1" BSP D40 – 1" BSP D47 – SAE 1" 3000 psi flange							
<b>Tachometer</b> K TA TB EST							
<b>Spline billet</b> SB1 – 26 UNI 221 SB2 – 32 UNI 221 SB14 – 28 UNI 221							

EXAMPLE :

IAM 200 H1 A0 D31

IAM 100/BH H1 A0 D31 K